

Refuge

There is a story in Exodus 33 where Moses is on the mountain with God and asks to see God's glory. God reminds Moses that mortals cannot see God's face, and so instructs him to hide in the cleft of a rock. God holds a hand over the cleft to protect Moses during the pass-by. Afterwards, Moses can peek out and see God's back.



I've always loved the image of God's hand covering Moses in the cleft of the rock. Some might find it a bit confining, but it makes me think of safety, and refuge. In Moses' case, God is protecting Moses from overwhelming glory and divinity that is in the character of God. In our case, how might God protect us?

Praying with an image is a creative way of opening ourselves up to a different aspect of the character of God. Rather than focusing on the names and situations that we want to pray about, we think about or look at the image, and enter prayer. You might imagine the people you want to pray for being held in the cleft by God. Try seeing yourself safely in that cleft, all of the fears, anxieties, and worries blocked out by God's hand.

Through April, we will finish up our Lenten series: Sanctuary, Finding refuge in God and offering that refuge to a hurting world. We have explored the different ways that we can find rest, or peace in God in the midst of a chaotic world. But taking that a step further, we need to see how to offer that same rest and peace to a world that is hurting.

How can we imagine others covered by the hand of God, protected from all that they may be dealing with? How can we use that image in our prayers to ask for refuge and comfort and healing?

21 "There is a place near me where you may stand on a rock. 22 When my glory passes that place, I will put you in a large crack in the rock and cover you with my hand until I have passed by." Exodus 33:21-22

Let us offer that refuge.

Blessings,

Pastor Dan



April Birthday Wishes

Janet Ulukivaiola	4
Davina Ve'a	7
Peter Michalski	13
Nathan Woods	14
Hevaha Malupo	15
Norma Stichick	17
Damon Gendron	18
Tali Ve'a	22
Halavaati Unga	25
Fuetahi Pakileata	26
Sheri Whitethorn	28

Looking for someone to take on the Birthday Blessings Ministry. Contact Sandra Woods.



Judy and Ken Pendelton April 16– 59 years

Vicki and Tom Packer April 24– 60 years

Lupe and Loleini Saafi April 29– 53 years.



A Quiet Space or a Contemplative Journey

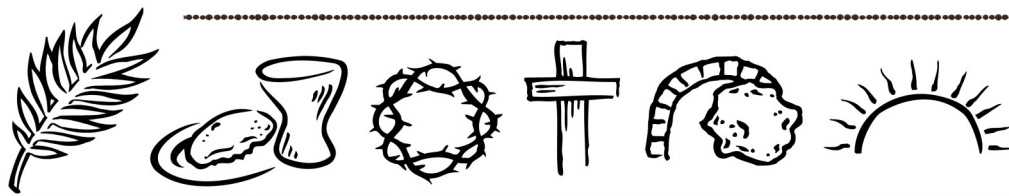
The prayer room is open any time the church office is open (8am-3pm Monday and Wednesday; 8am-2pm Friday) If you would like another to pray with you, please call the church office to set up meeting with a prayer partner.

To request prayers through the Prayer Chain, please contact the office. There is also a group that meets Tuesdays at 5:00pm. To join that group or request prayers from them, please contact the office.

"Be merciful to me, O Lord, for I am calling on you constantly." Psalm 86:3

POTLUCK SUNDAY APRIL 6– EASTER THEME.

Vicki is also looking for someone to organize the May 4th potluck.



H o l y W e e k

Maundy Thursday service at Anchor Park April 17

Good Friday service at First United April 18

"Sunrise" service Anchor Park April 20

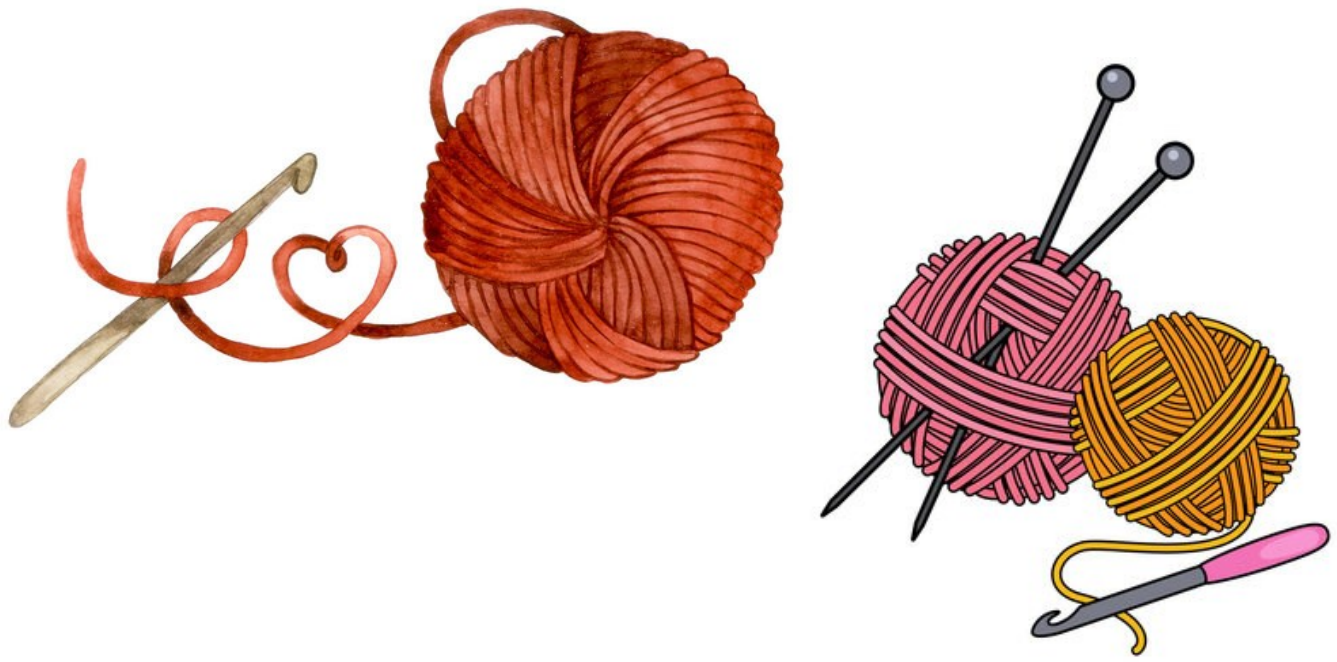


Warming Center— One Day a Week

Church Council continues to work making our dreams from our Retreat in October 2024 a reality. At the Retreat we talked about providing a space for those without homes to spend some time during the day. And have intentional volunteers to host this time. At the March Church Council meeting, we decided to start an intentional Warming Center one day a week from 9am—3pm. We will offer coffee and tea and a place to sit and warm up. We will start with volunteers from Anchor Park and ANHOPE. Those able to volunteer will decide what one day a week we will start with. Just because we are moving out of the winter months does not make the need for a warm, dry space any less important. We hope to start before Easter. If you are able to volunteer, please contact Pastors Dan and Murray or Sandra Woods and let us know what day and time you are available.



There is a selection of books on the table outside of Pastor Dan's office which he is clearing from his collection. Feel free to take any that might interest you or might interest someone you know. They'll be there for a couple of weeks.



Fiber Fellowship

April 7 and 21

During April, Fiber Fellowship will be meeting in its regular pattern, the first and third Monday evenings of the month - the 7th and 21st.

We gather at 6:30 pm in person in the Lawhorn Room at Anchor Park while always having Zoom access available as well for those who find that the best way to connect.

During our time together, we share a devotion, experience fellowship with others as we work on items of warmth, and always close our time together in prayer.

All interested individuals are welcome to join us anytime.

Questions? - contact Jo Anne via text or phone at 907-903-5025.

To join by Zoom, use the following link: <https://greaternw.zoom.us/j/225718367#>

If connecting by phone - call 301-715-8592 - meeting ID is 225718367#

Children's Easter Event

Saturday April 12 1pm-3pm

There will be egg coloring, crafts, bingo, food and an egg hunt. Please sign up on the Connect card to find a way to help with this event or contact Vicki Packer or the Church Office.



Easter Blessings

United Women in Faith

United Women in Faith April 13

On Sunday April 13, we will learn about the podcast “Voices from the Field” and assemble hygiene kits for girls and women in need.



United
Women
in Faith

THANK YOU

for



GIVING

Blessing Box Needs

Please continue donating shelf stable food products. We still need new or gently used gloves/mittens and scarves. Thanks to everyone for your donations and financial support!



United
Women
in Faith



SCAN TO REGISTER

Book STUDY



United
Women
in Faith

Alaska United Women in Faith



Tuesday

Tuesday, April 22nd

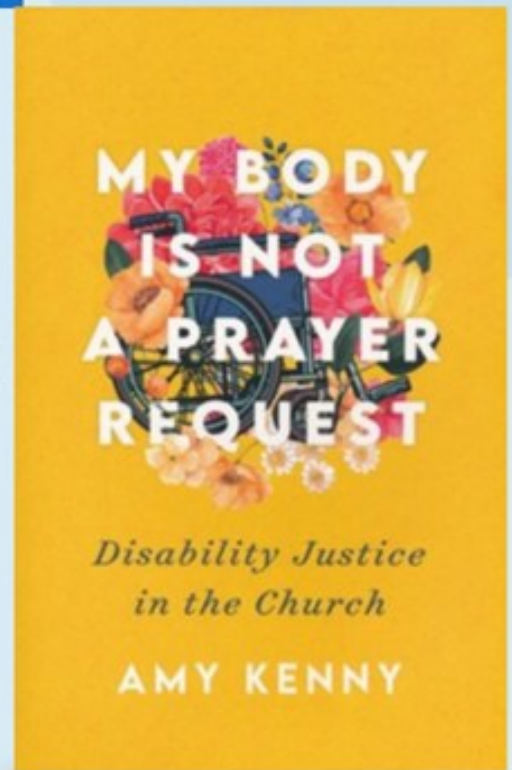


7:00 pm



on Zoom

SAVE THE DATE



Leader
Jenn Miller



April History for Anchor Park

April 1992 - new carpet was placed in Lawhorn Room

2000 - Tongan Fellowship held a car wash

2004 - Celebrated 50th Anniversary

2006 - Pam Bell organized bicycle field trips

2010 - Provided box labels for McCurdy School

2014 - Hosted first Crossroads Baby Shower

2014 - Nuisini Family purchased 2 picnic tables

2018 - Chess Club started by Bob Mitchell

2018 - The Perry Award was created

More details can be found in the 4 history books done by church historian
Larry Hayden

Safe Sanctuaries Policy Update

Anchor Park UMC

The Church Council of Anchor Park UMC updated and approved our Safe Sanctuaries policy at the March meeting. This policy requires all staff and volunteers who work with children, youth and vulnerable adults to undergo a background check and training. This training is done upon hire/accepting the volunteer and annually.

In April 1996, the General Conference of The United Methodist Church adopted a resolution aimed at reducing the risk of child sexual abuse in the church. A central tenet of the Christian faith is the inherent value and worth of all children, youth, and adults. Children, youth, and other vulnerable people are least able to protect themselves in our society and are particularly vulnerable to abuse and neglect. The United Methodist Church is eager to do all it can to protect the youth, children, and other vulnerable people who participate in the life of this congregation. Our Christian faith calls us to offer both hospitality and protection to our children, youth, and other vulnerable people.

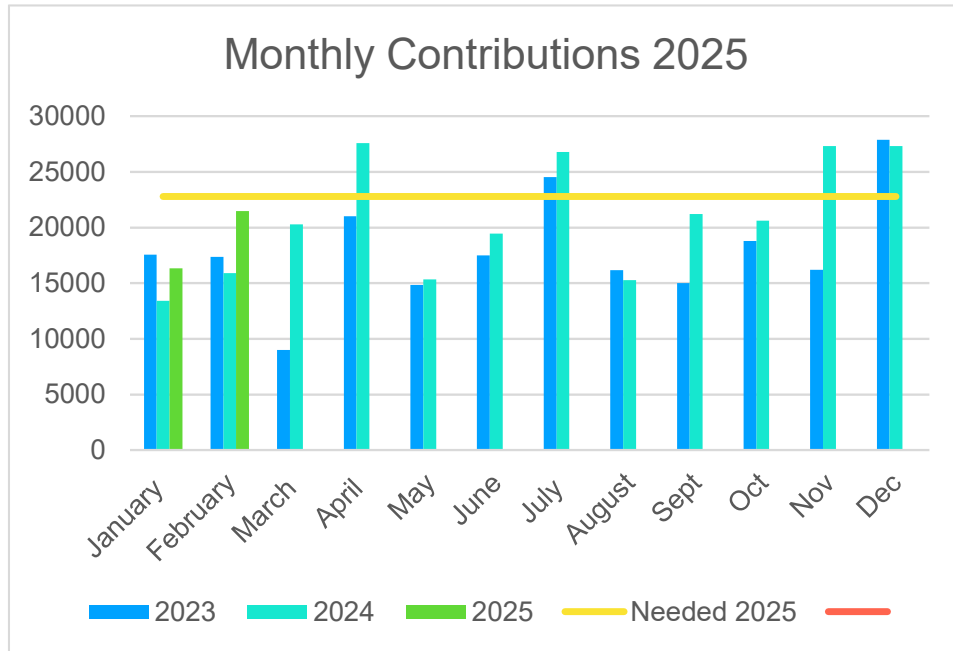
Tragically, churches have not always been safe places for children, youth, and other vulnerable people. Neglect, sexual abuse, and exploitation occur in churches, both large and small, urban and rural. The problem cuts across all economic, cultural, racial, and ethnic lines. God calls us to make our churches safe places, protecting children, youth, and other vulnerable people from abuse. Abuse prevention and ministry protection policies and procedures are essential for congregations, not only for the protection and safety of our children, youth, and other vulnerable persons, but also for our volunteers and staff working with them.

Jesus taught, "Whoever welcomes one such child in my name welcomes me" (Mark 9:37 NRSV) and "If any of you put a stumbling block before one of these little ones...it would be better for you if a great millstone were fastened around your neck and you were drowned in the depth of the sea" (Matthew 18:6 NRSV).

- We should not allow possible risks to undermine or stop our ministry. Rather, we must:
 - Acknowledge the risks and develop a practical plan to address these issues;
 - Take steps to prevent harm to our children, youth, and other vulnerable persons; and
 - Continue to answer the Gospel's imperative to be in ministry with children, youth, and other vulnerable persons, thus making a difference in their lives. Safe Sanctuaries policies and implementation of practices that reflect those policies seek to fulfil this call for our church.

Please help Anchor Park UMC remain a safe space for all of God's children. Keep your training up to date.

YOUR GIVING MATTERS!



Each week in the Mini-Link the Financial Secretaries give the congregation a snapshot of our giving of the previous week. There is DESIGNATED giving which is to be spent for a specific purpose, i.e. Downtown Hope Center to purchase items they need. The UNDESIGNATED giving goes into the General Budget. That's the fund we use to pay salaries, utilities and supplies so we can provide the missions and ministries of the church. To meet our budget for the month, Anchor Park needs approximately \$23,000.00 a month (the yellow line). As you can see from 2023 and 2024, some months we fall short and other months we exceed this goal. All of this allows us to keep the doors open for mission. The Committees and Ministries are also conscious of their spending and help costs down.

Anchor Park ended 2024 comfortably in the black because of your faithful giving. At the April finance meeting, we will be looking at putting some of the money into our Budget Reserve account to save for a "rainy day." That Budget Reserve account was used at the beginning of COVID to help pay our bills when we weren't able to meet in person. The Endowment Committee will also meet in April and make recommendations to Church Council about how to use our dividends (approximately \$300,00).

As the Chair of the Committee on Finance, I'm very excited and hopeful about what God has in store for us this year.



F.I.S.H. began in the early 1960's in England as a way to revive the old -fashioned concern for one's neighbor. Today there are over 1,000 F.I.S.H. groups around the world. The Anchorage organization began in 1967. The name comes from the F.I.S.H. symbol that early Christians sketched in the sand to identify and help one another.

In Anchorage, F.I.S.H. stands for "Friends in Serving Humanity." F.I.S.H. is a volunteer group of Anchorage residents who provide and deliver emergency food to people and families in need, without bureaucratic hassle, red tape, and means testing. In short, we're just neighbors helping neighbors.


- F.I.S.H. is the only food pantry in Anchorage that delivers food directly to homes on a regular basis.
- During 2013 F.I.S.H. delivered over 123,000 meals to 13,600 people, of which nearly 50% were children.
- F.I.S.H. has no paid staff, but 70 community volunteers answer phones, buy and collect, repack, and deliver food.
- We are a partner agency of the Food Bank of Alaska, which helps to supply our pantry.
- F.I.S.H. is a 501(c)(3) non-profit organization.

Anchor Park is one of the three United Methodist Churches in Anchorage that support FISH.



April 2025



Sunday	Monday	Tuesday	Wednesday	Thursday	Friday	Saturday
30 Worship 11am ANHOPE 2pm	31 Strong Women Strong Bones 10-11 AM Tongan Room	1 Strong Women Strong Bones 1-2PM Tongan Room Trauma Healing 7pm	2 Strong Women Strong Bones 10-11 AM Tongan Room ANHOPE potluck & Bible Study 6pm Handbell choir 6:30pm	3 Strong Women Strong Bones 1-2PM Tongan Room AA- 8pm	4	5 Quilting Women Meeting Stephen Ministry Training 8am
6 Worship 11am ANHOPE 2pm	7 Strong Women Strong Bones 10-11 AM Tongan Room Fiber Fellowship 6:30pm Lawhorn Rm	8 Strong Women Strong Bones 1-2PM Tongan Room 6:30 Finance team Trauma Healing 7pm	9 Strong Women Strong Bones 10-11 AM Tongan Room ANHOPE potluck & Bible Study 6pm Handbell choir 6:30pm	10 Strong Women Strong Bones 1-2PM Tongan Room AA- 8pm	11	12 Children's Easter Event 1-3pm
13 Worship 11am EPIC Youth 12pm UWiFaith meeting 12pm ANHOPE 2pm	14 Strong Women Strong Bones 10-11 AM Tongan Room	15 Strong Women Strong Bones 1-2PM Tongan Room Church Council 6:30pm	16 Strong Women Strong Bones 10-11 AM Tongan Room ANHOPE potluck & Bible Study 6pm Handbell choir 6:30pm	17 Maundy Thursday Strong Women Strong Bones 1-2PM Tongan Room Birchwood Camp Board 6:30pm AA- 8pm	18 Good Friday	19
20  Worship 11am ANHOPE 2pm Clare House Meal 1pm	21 Strong Women Strong Bones 10-11 AM Tongan Room Fiber Fellowship 6:30pm Lawhorn Rm	22 Strong Women Strong Bones 1-2PM Tongan Room Trauma Healing 7pm	23 Strong Women Strong Bones 10-11 AM Tongan Room ANHOPE potluck & Bible Study 6pm Handbell choir 6:30pm	24 Strong Women Strong Bones 1-2PM Tongan Room AA- 8pm	25	26
27 Worship 11am Girl Scouts 1pm ANHOPE 2pm	28 Strong Women Strong Bones 10-11 AM Tongan Room	95 New Year's Eve Strong Women Strong Bones 1-2PM Tongan Room	30 Strong Women Strong Bones 10-11 AM Tongan Room ANHOPE potluck & Bible Study 6pm Handbell choir 6:30pm	1 Strong Women Strong Bones 1-2PM Tongan Room AA- 8pm	3	3 Quilting Women Meeting

We worship in person on Sundays at 11:00am
streamed on Facebook Live

<https://www.facebook.com/anchorparkumc>



YouTube channel:
Anchor Park UMC AK



Welcoming

ALL PEOPLE, as we experience and share God's love.

Loving

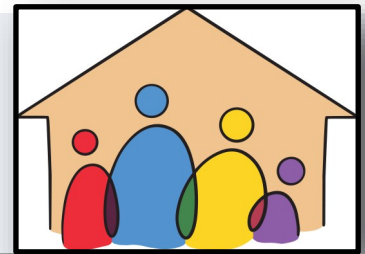
God and neighbor, knowing that love will encourage diversity and span differences



Serving

our community and beyond in hope and love

2300 Oak Drive
Anchorage, Alaska 99508



Anchor Park provides one meal a month for **Clare House**, a mission of Catholic Social services. Please consider signing up to provide part of the meal. Sign up is online at

<https://www.signupgenius.com/go/508084dacad2cabfb6-clare>

Coffee Fellowship
Look for the Sign Up
sheet at the Entrance

Lay Reader
Speak to the Pastors
or add your name
on the sign-up sheet at the
entrance

Pot Luck
April 6



All youth ages 11 thru 18 are
welcome!
Second Sunday each month

LINK editor: Sandra Woods

send articles to office.anchorparkumc@gmail.com

PRIVACY POLICY – Any personal information, including mobile information will not be shared with third parties/affiliates for marketing/promotional purposes. All the above categories exclude text messaging originator opt-in data and consent; this information will not be shared with any third parties. If anyone wishes to be removed from receiving future communications, either by text or by email, please email office@anchorpark.org with your information, and what text or email list you'd like to be removed from.

Worship with Us!! Visit www.anchorpark.org for available in person, on-line, and smart-phone options.

Office Phone: 907-277-0152 Email: office.anchorparkumc@gmail.com Office Hours: Mon & Wed 8-3; Fri 8-2